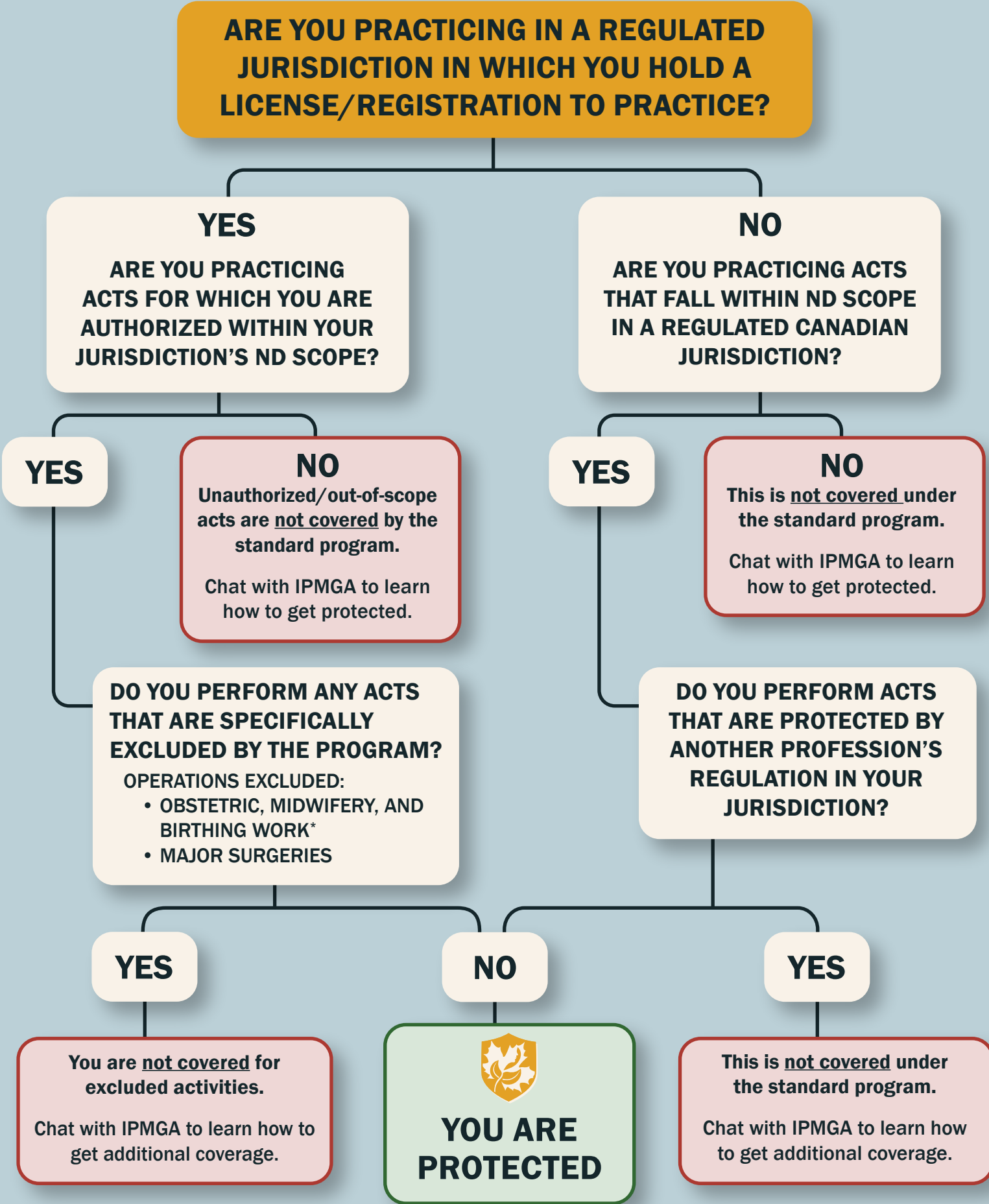


# AM I COVERED UNDER THE NEW CAND MEDICAL MALPRACTICE INSURANCE PROGRAM?



\*DOULA WORK IS INCLUDED WITH THE MALPRACTICE INSURANCE. DOULA IS DEFINED AS NOT DELIVERING THE BABY "HANDS ON" AND THE PRIMARY CAREGIVER IS RESPONSIBLE FOR THE BIRTH (MIDWIFE OR L&D PROFESSIONAL)



Meet with IPMGA today!  
[cand.ipmgainsurance.com](http://cand.ipmgainsurance.com)



INSURANCE PROGRAM MANAGERS  
GROUPS & ASSOCIATIONS

CANADIAN ASSOCIATION OF NATUROPATHIC DOCTORS  
ASSOCIATION CANADIENNE DES DOCTEURS EN NATUROPATHIE